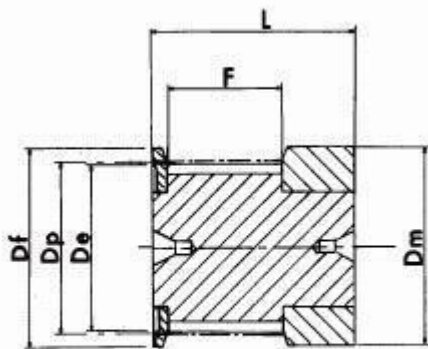


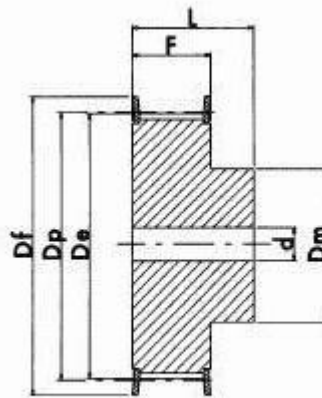


Synchroflex Timing Pulleys T2.5

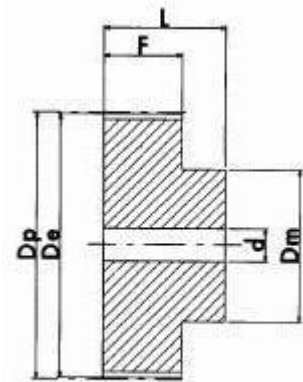
for 6mm wide belt
Centre drilled or Pilot Bore
in Aluminium with Zinc plated Steel Flanges



EXECUTION 0F



EXECUTION 1F



EXECUTION 2

Dimensions

Please note : All dimensions subject to change.
Pulleys may be Bored or Unbored.

If a dimension is critical to your application please contact our sales department for confirmation.
for special pulleys or reworked pulleys please contact our manufacturing department

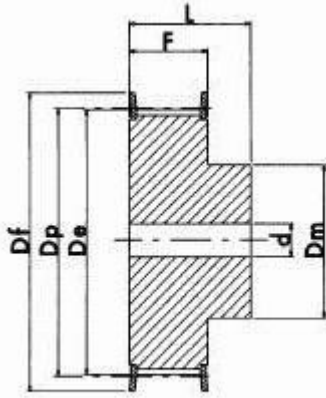
Code	Type	No. Teeth	Dp	De	Df	Dm	F	L	Pilot Bore	No. Flanges
16T2.5/10-2	0F	10	7.96	7.45	10	10	9	16	3	2
16T2.5/12-2	0F	12	9.55	9.00	12	12	9	16	3	2
16T2.5/14-2	0F	14	11.14	10.60	14	14	9	16	3	2
16T2.5/15-2	0F	15	11.94	11.40	15	15	9	16	3	2
16T2.5/16-2	0F	16	12.73	12.20	16	16	9	16	4	2
16T2.5/18-2	1F	18	14.32	13.80	17	10	10	16	4	2
16T2.5/19-2	1F	19	15.12	14.60	18	10	10	16	4	2
16T2.5/20-2	1F	20	15.92	15.40	19	12	10	16	4	2
16T2.5/22-2	1F	22	17.51	17.00	20	14	10	16	4	2
16T2.5/24-2	1F	24	19.10	18.55	22	14	10	16	4	2
16T2.5/25-2	1F	25	19.89	19.35	23	14	10	16	4	2
16T2.5/28-2	1F	28	22.28	20.15	25	14	10	16	4	2
16T2.5/30-2	1F	30	23.87	21.75	27	16	10	16	6	2
16T2.5/32-2	1F	32	25.46	23.35	28	16	10	16	6	2
16T2.5/36-2	1F	36	28.65	24.95	31	20	10	16	6	2
16T2.5/40-2	1F	40	31.83	28.15	35	22	10	16	6	2
16T2.5/48-0	2	48	37.70	37.70	-	26	10	16	6	0
16T2.5/60-0	2	60	47.75	47.25	-	34	10	16	8	0

Synchroflex Timing Pulleys T5

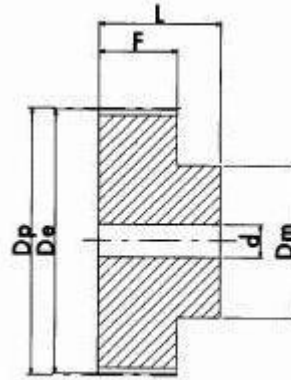
for 10mm wide belt

Centre drilled or Pilot Bore

in Aluminium with Zinc plated Steel Flanges



EXECUTION 1F



EXECUTION 2

Dimensions

Please note : All dimensions subject to change.
Pulleys may be Bored or Unbored.

If a dimension is critical to your application please contact our sales department for confirmation.
for special pulleys or reworked pulleys

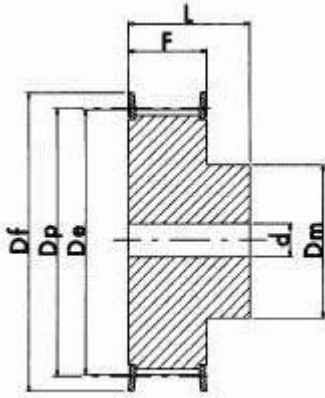
Code	Type	No. Teeth	Dp	De	Df	Dm	F	L	Pilot Bore	No. Flanges
21T5/10-2	1F	10	15.92	15.05	20	8	15	21	-	2
21T5/12-2	1F	12	19.10	18.25	23	12	15	21	-	2
21T5/14-2	1F	14	22.28	21.45	26	14	15	21	-	2
21T5/15-2	1F	15	23.87	23.05	28	16	15	21	6	2
21T5/16-2	1F	16	25.46	24.60	30	18	15	21	6	2
21T5/18-2	1F	18	28.65	27.80	33	20	15	21	6	2
21T5/19-2	1F	19	30.24	29.40	34	22	15	21	6	2
21T5/20-2	1F	20	31.83	31.00	36	24	15	21	6	2
21T5/24-2	1F	24	38.20	37.35	42	26	15	21	6	2
21T5/25-2	1F	25	39.79	38.95	43	26	15	21	6	2
21T5/27-2	1F	27	42.97	42.15	47	30	15	21	8	2
21T5/30-2	1F	30	47.75	46.90	51	34	15	21	8	2
21T5/32-2	1F	32	50.93	50.10	55	38	15	21	8	2
21T5/36-2	1F	36	57.30	56.45	61	38	15	21	8	2
21T5/40-2	1F	40	63.66	62.85	67	40	15	21	8	2
21T5/48-0	2	48	76.39	75.55	-	50	15	21	8	0
21T5/60-0	2	60	95.49	94.65	-	65	15	21	8	0

Synchroflex Timing Pulleys T5

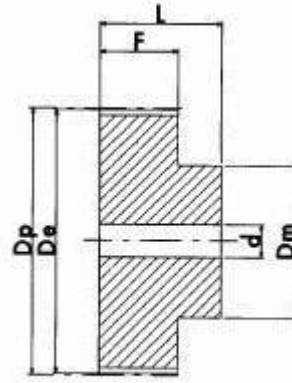
for 16mm wide belt

Centre drilled or Pilot Bore

in Aluminium with Zinc plated Steel Flanges



EXECUTION 1F



EXECUTION 2

Dimensions

Please note : All dimensions subject to change.
Pulleys may be Bored or Unbored.

If a dimension is critical to your application please contact our sales department for confirmation.
for special pulleys or reworked pulleys

Code	Type	No. Teeth	Dp	De	Df	Dm	F	L	Pilot Bore	No. Flanges
27T5/10-2	1F	10	15.92	15.05	20	8	21	27	-	2
27T5/12-2	1F	12	19.10	18.25	23	12	21	27	-	2
27T5/14-2	1F	14	22.28	21.45	26	14	21	27	-	2
27T5/15-2	1F	15	23.87	23.05	28	16	21	27	6	2
27T5/16-2	1F	16	25.46	24.60	30	18	21	27	6	2
27T5/18-2	1F	18	28.65	27.80	33	20	21	27	6	2
27T5/19-2	1F	19	30.24	29.40	34	22	21	27	6	2
27T5/20-2	1F	20	31.83	31.00	36	24	21	27	6	2
27T5/24-2	1F	24	38.20	37.35	42	26	21	27	6	2
27T5/25-2	1F	25	39.79	38.95	43	26	21	27	6	2
27T5/27-2	1F	27	42.97	42.15	47	30	21	27	8	2
27T5/30-2	1F	30	47.75	46.90	51	34	21	27	8	2
27T5/32-2	1F	32	50.93	50.10	55	38	21	27	8	2
27T5/36-2	1F	36	57.30	56.45	61	38	21	27	8	2
27T5/40-2	1F	40	63.66	62.85	67	40	21	27	8	2
27T5/48-0	2	48	76.39	75.55	-	50	21	27	8	0
27T5/60-0	2	60	95.49	94.65	-	65	21	27	8	0